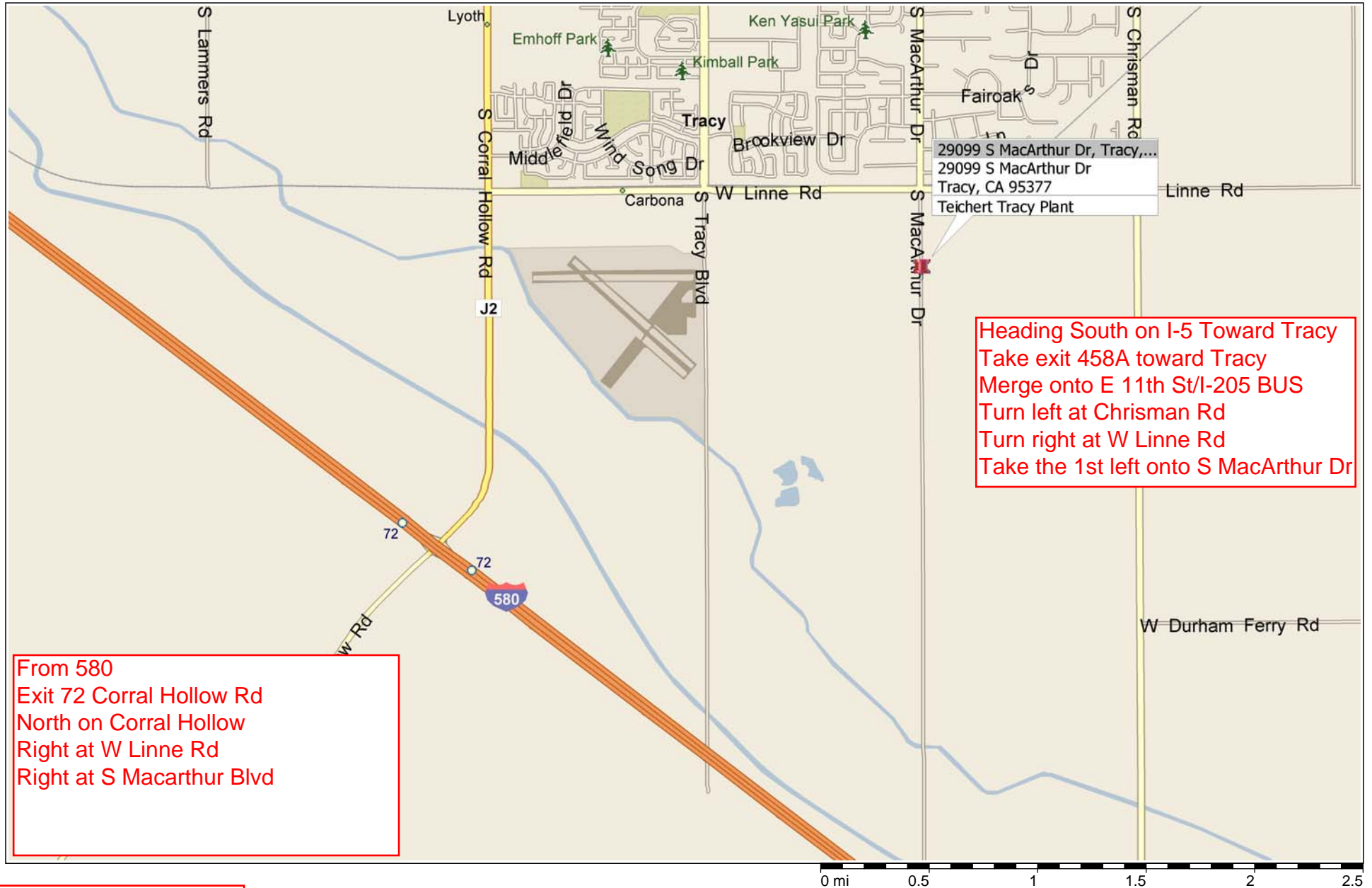


Refer to Website for Teichert  
Cement Unloading Procedures

## Teichert Tracy Plant



Heading South on I-5 Toward Tracy  
Take exit 458A toward Tracy  
Merge onto E 11th St/I-205 BUS  
Turn left at Chrisman Rd  
Turn right at W Linne Rd  
Take the 1st left onto S MacArthur Dr

From 580  
Exit 72 Corral Hollow Rd  
North on Corral Hollow  
Right at W Linne Rd  
Right at S Macarthur Blvd

**OPERATING HOURS:**  
5AM-3:25AM

ation and/or its suppliers. All rights reserved. <http://www.microsoft.com/streets/>  
TEQ. All rights reserved. The Data for areas of Canada includes information taken with permission from Canadian authorities, including: © Her Majesty the Queen in Right of Canada, © Queen's Printer for  
trademarks of NAVTEQ. © 2009 Tele Atlas North America, Inc. All rights reserved. Tele Atlas and Tele Atlas North America are trademarks of Tele Atlas, Inc. © 2009 by Applied Geographic Systems. All rights